



User Help: Part Report

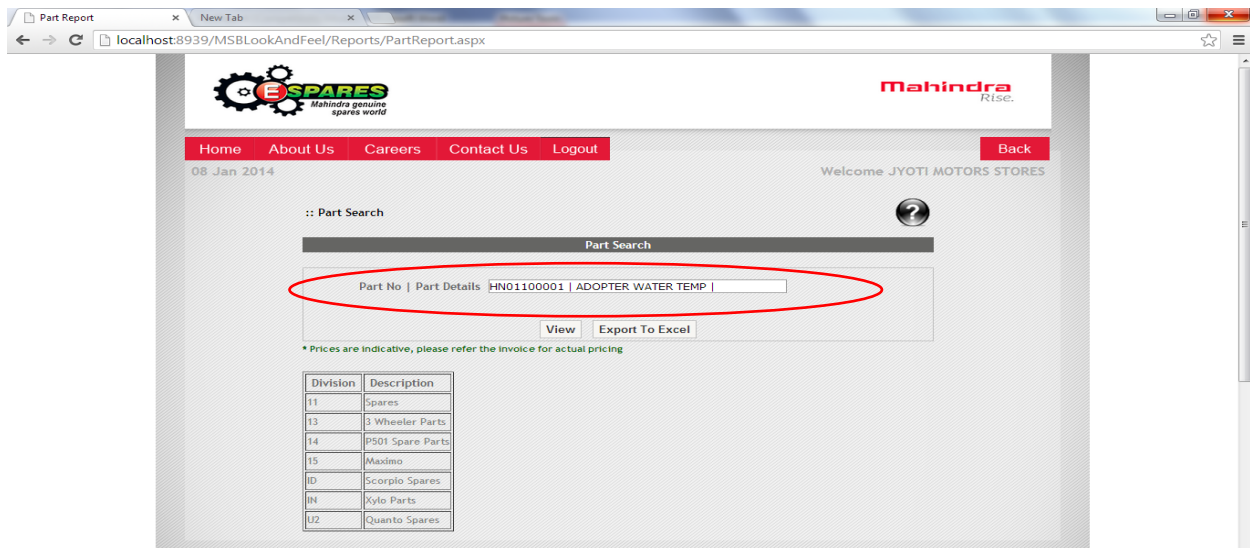
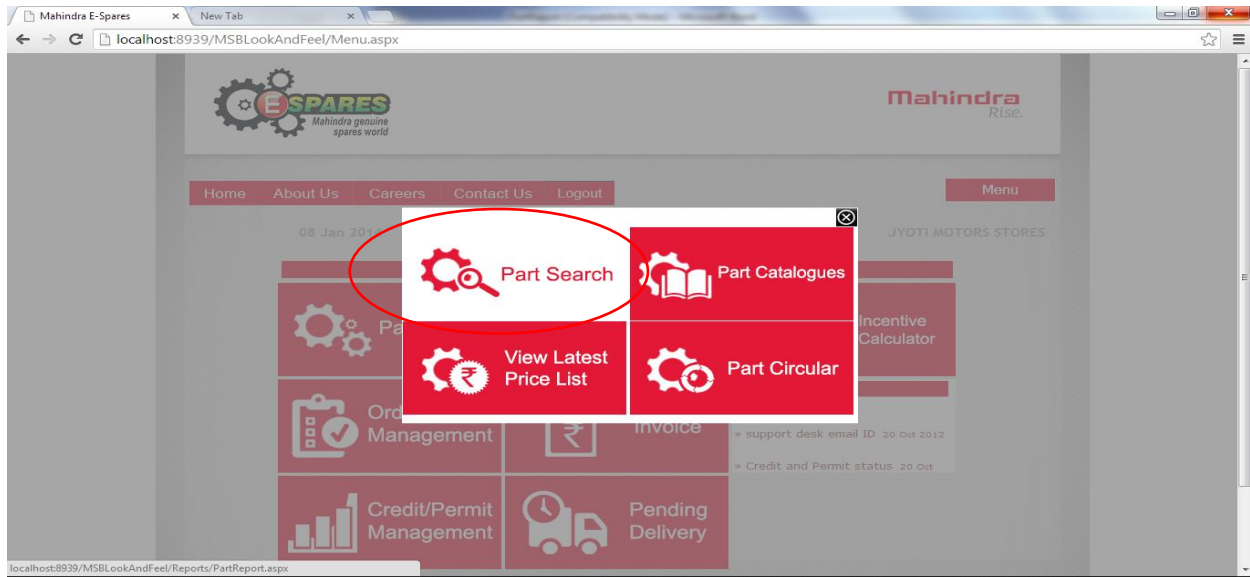
February 7, 2014

## Reports-

This is useful in viewing reports of different types, the list of reports is shown in the screen shot below:

## Part Report:

To view Part report, enter part number, click on 'View' or click 'Export to Excel'. 'Open' or 'Save' the file to view it.





Sample Part Report Details:

PartReport (1) - Microsoft Excel

SrNo	PartNo	PartDesc	MinOdrQty	GNDPPrice	MRP	PartTypeCode	DeleteFlag	Division	DivDesc	AlternatePart	Delive
1	81934	BOLTHXHDG12.70X95.25mm(1/2"12 BSW X33/	1	0	0	2		11	Spares		